

# Triflex

Delivering solutions together.

15 YEAR DURABILITY RESET:  
SUSTAINABILITY IN PRACTICE

## PATRIOTIC STREET JERSEY

# CASE STUDY

**Authorised Contractor:**  
Concrete Repairs Ltd (CRL)

**Systems**  
Triflex ProPark®  
Triflex DeckFloor with Emery

**Area:**  
Triflex ProPark 1,750m<sup>2</sup>  
Triflex DeckFloor 1,000m<sup>2</sup>

📞 01785 819119

🌐 [triflex.co.uk](https://triflex.co.uk)

✉ [info@triflex.co.uk](mailto:info@triflex.co.uk)

 Triflex (UK) Ltd

Triflex (UK) Ltd. | Whitebridge Way | Stone | Staffordshire | ST15 8JS v1.18.09.24



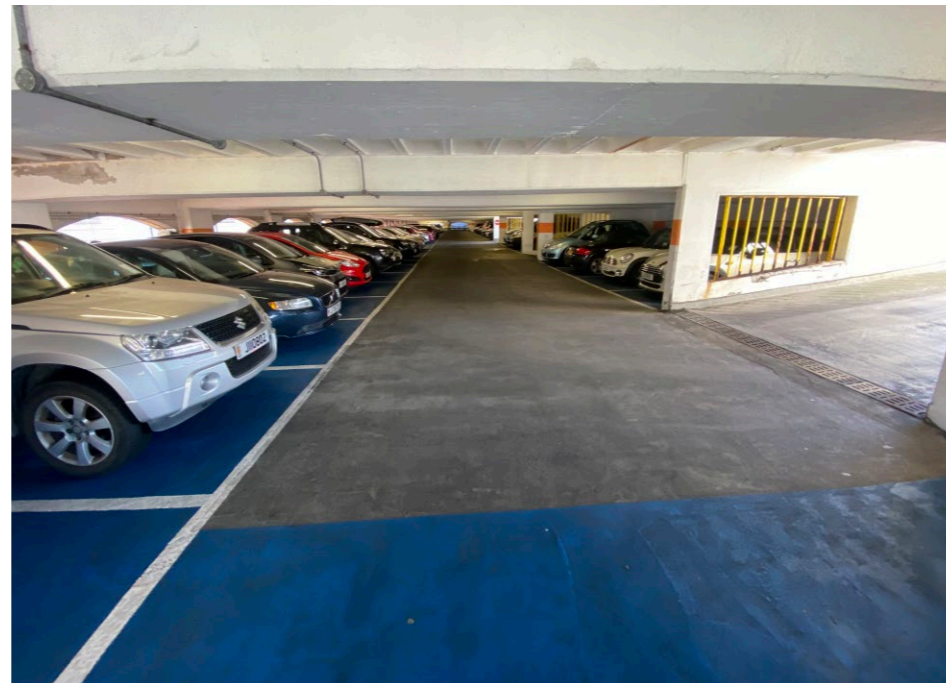
# Introduction

Built in the 1980's the multi-storey car park serves the town centre and the neighbouring hospital. The 750 spaces are spread across 12 floors. As part of the life care plan for this important facility and hard working structure, the waterproofing surfacing and protection system are reviewed every 15 years.

Triflex systems were installed some 15 years ago delivering waterproofing to the external asphalt decks and internal concrete decks.







# The challenge

The external decks 11 and 12 were protected by a Triflex waterproofing and surfacing system installed over the original asphalt substrate. The suspended internal concrete decks 3 to 10 had also previously been protected with a Triflex system.

Triflex was asked to propose a bespoke project proposal to provide continued waterproofing, surfacing and protection as part of the owner's life care plan. It was important that the solution offered minimal disruption to this busy car park with areas remaining open.

The Triflex Technical team, working closely with Triflex Authorised Contractor CRL assessed the current status of the existing in situ Triflex system for overlay with further Triflex materials.

Triflex systems adhere readily to existing Triflex systems and testing was conducted to determine any further preparation, pretreatment and primer requirements. For the external decks, core testing was undertaken, showing that the in situ Triflex system remained fully bonded to the asphalt substrate. Adhesion and cohesion strength testing was undertaken on the internal decks to confirm adhesion of the proposed Triflex system to the fully bonded in situ Triflex system.

A bright and welcoming colour scheme was installed in the original scheme, which was required to continue today.



# The solution

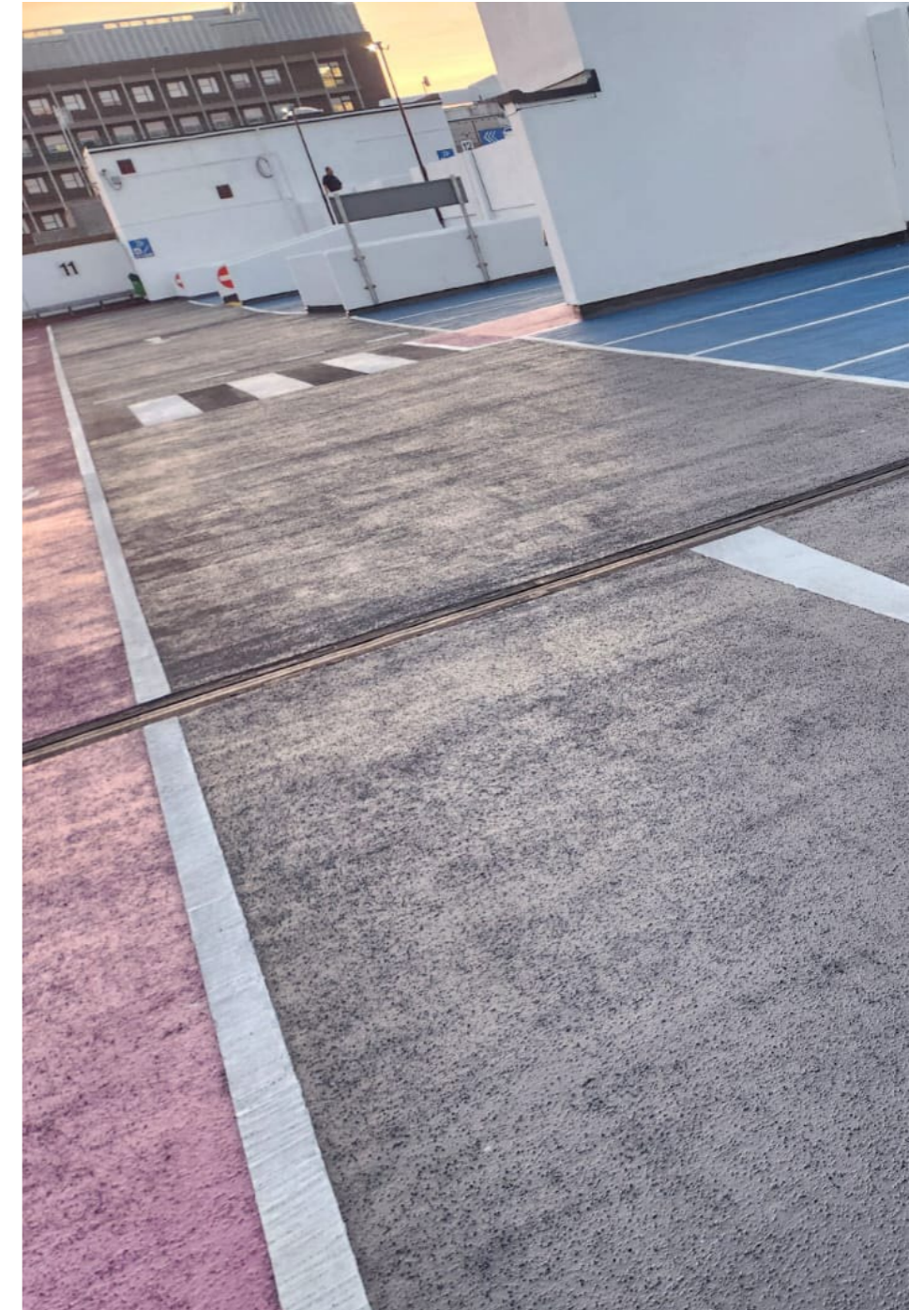
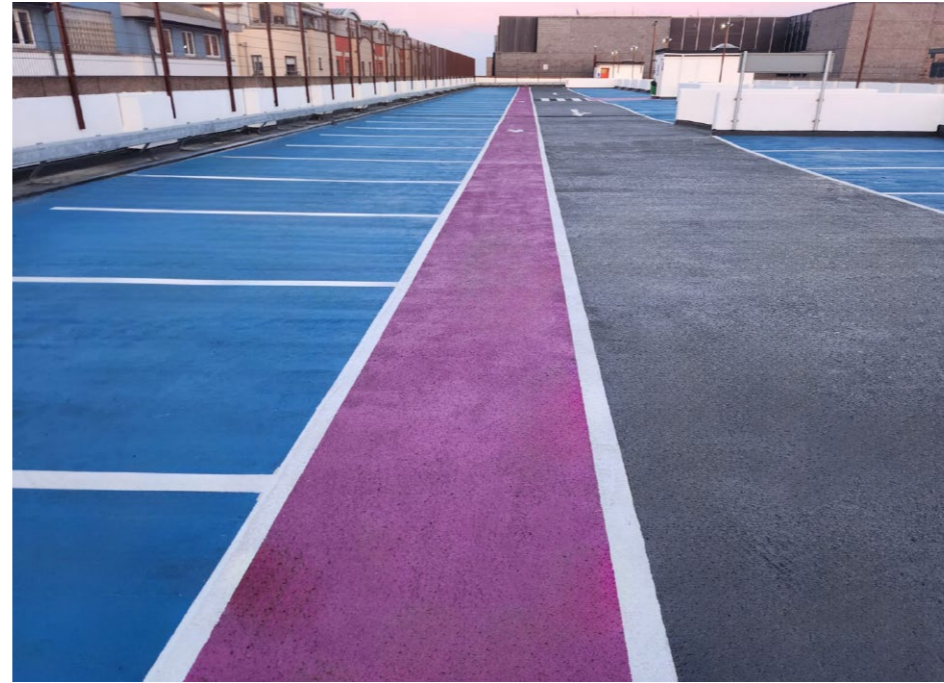
## An overlay of Triflex system with a further Triflex system

External deck core testing confirmed that the existing system could be overlaid with Triflex materials. The resulting bespoke project proposal recommended the fully reinforced Triflex ProPark system.

The Triflex ProPark system is a heavy duty system engineered to accommodate movement. The enhanced elastomeric properties and high tensile strength reinforcement delivers certified dynamic crack bridging capability (EN 1504-2:B4.2 -20°C) for peace of mind. Coupled with a BBA certified durability of 15 years, the system will provide long term protection of the structure, which is now more than 40 years old.

For the internal deck system, Triflex DeckFloor with Emery was proposed for the driving aisles and ramps only, which are exposed to higher forces and stresses. The parking bays remain as they were, with an in-situ Triflex system, which continue to provide surfacing and protection until review.

The Triflex DeckFloor with Emery PMMA resin based system can withstand long term heavy traffic and delivers high performance waterproofing, surfacing and protection. With high resistance to road salts and other chemicals and the tough Emery delivering a high anti-skid surface, its perfect for those areas subjected to higher forces.







# The solution

Conventional removal of a coating often means removal of the underlying asphalt, which is negated by an overlay solution. Across all floors, overlaying the in situ Triflex system could be quickly and easily achieved without the need for any costly removal. Preparation of the in situ Triflex system is a simple cleaning process.

With rapid cure times the overlay solution provided minimal disruption to the car park, and most floors could remain open thanks to a rolling programme of works. Ramps and critical areas can be installed overnight limiting access restrictions. Triflex PMMA systems are unaffected by UV, meaning that bright colours can be confidently incorporated into the pigmented resin and finishes. With over 50 standard finish colors to choose from or a bespoke option, owners can incorporate many design features. The external decks of Patriotic Street design use this to striking effect, with strong demarcation and waymarking.

Whilst during the intervening years many vehicles had trafficked the surfaces, only some minor repairs were evident in the original Triflex waterproofing surfacing and protection system. The Triflex cold liquid applied systems could be quickly refurbished with a further Triflex system delivering project efficiency. With no environmentally challenging strip up or hot works, coupled with the high durability of the system, the refurbishment project approach fits with Jersey's environmental ambitions. All works were completed to a high standard by Concrete Repairs Limited, Triflex Authorised Contractor.

Paul Gibaut, Senior Parking Control Manager, Government of Jersey:

"Triflex systems offer us a longevity and robustness which means they have withstood the harsh environment of this car park located near the coast. The fact that we could overlay the in situ Triflex system some 15 years later made a cost effective choice, negating lengthy and time consuming preparation work associated with other systems."



## System benefits

# Triflex ProPark®

- Fully reinforced waterproofing, surfacing and protection system
- Totally cold applied, with no risk from hot works
- Dynamic crack bridging membrane
- Service life in excess of 15 years
- Designed to overlay failed asphalt and concrete
- Exceptionally rapid curing / rainproof times, even at low temperatures
- Tough and durable protection
- High levels of anti-skid
- Certified and tested to the highest UK and European standards
- Solvent and isocyanate free
- Comes in a range of standard and bespoke colours

Certified and tested to:

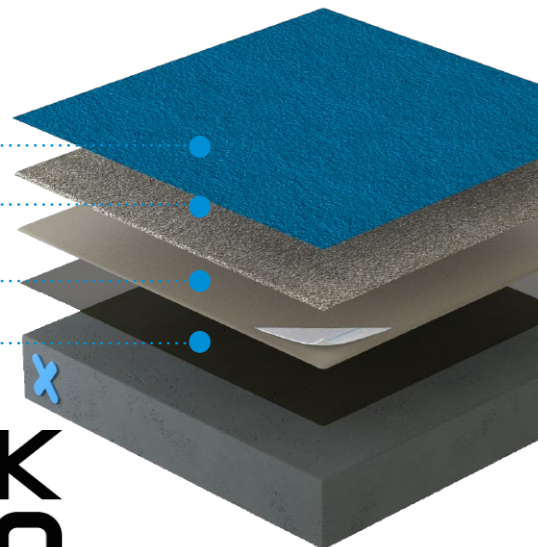
- EN 1504-2: Dynamic crack bridging class B4.2 (-20°C)
- EN 13501-1: Class Bfl-s1
- EN 13501-5: Class B<sub>ROOF</sub>(t4)

Finish

Waterproofing wearing layer

Reinforced waterproofing  
(single process)

Primer (if required)



## System benefits

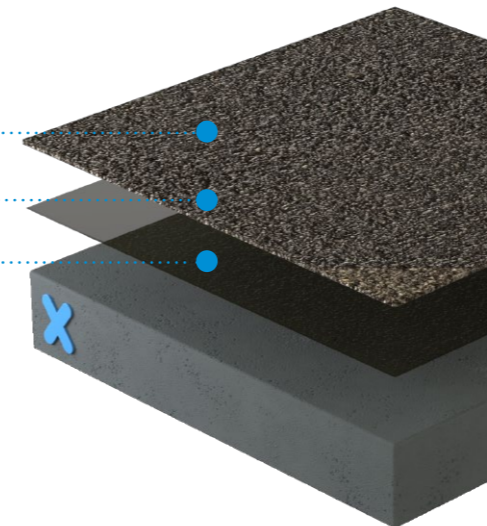
# Triflex DeckFloor with Emery

- PMMA system for external and internal decks and ramps
- Compatible with a wide range of substrates, including asphalt and concrete
- Locally reinforced with dynamic crack bridging membrane
- High levels of long term skid resistance
- Exceptionally rapid curing, even at low temperatures
- Solvent and isocyanate free
- Totally cold applied, with no risk from hot works

Finish

Waterproof wearing layer

Primer



# Triflex

Delivering solutions together.

Triflex is the leading European specialist in cold liquid applied waterproofing, surfacing and marking resins. Our high-quality systems provide reliable and lasting waterproofing, surfacing, protection and markings for roofs, walkways, balconies, terraces, car parks, roads and infrastructure.

We are a family owned and operated company that provides tailored solutions worldwide. From our production facilities based in Minden, Germany, we have been researching and developing solutions designed to protect and repair the built environment for more than 40 years.

From our UK and Ireland headquarters based in Stone, Staffordshire we pride ourselves on providing our clients with tailored solutions and exceptional levels of service and support throughout all stages of their project. From conducting in-depth site surveys to our comprehensive testing and off-site and on-site support, Triflex delivers the highest standards.

Triflex solutions are certified to the highest standards, ensuring peace of mind for years to come.

☎ 01785 819119

🌐 [triflex.co.uk](http://triflex.co.uk)

✉ [info@triflex.co.uk](mailto:info@triflex.co.uk)

🌐 Triflex (UK) Ltd



# UK CA